



International School Moshi

PO Box 733
Moshi
Kilimanjaro
Tanzania

Tel: +255 27 2755004, 2755005
Fax: +255 27 2752877
Email (school): school@ismoshi.org
Email (counsellor): darylrustad@ed.ismoshi.com

Founded: 1969
Web: www.ismoshi.org
Accredited by: Middle States Association of Colleges & Schools
Council of International Schools

Director: Anna Marsden
College Counsellor: Daryl Rustad
Grades in school: Pre-K - 12
Medium of instruction: English

Moshi Campus

Head of Campus: Bob Cofer
Diploma Coordinator: Anthony Hemmens
CEEB Code: 643250
IB Code: 00032
UCAS Code: 47512

Arusha Campus

Head of Campus: Phil Bowen
Diploma Coordinator: Reed Anderson
CEEB Code: 643251
IB Code: 02607

School and Community

International School Moshi was founded over 45 years ago to provide an international boarding and day school serving the expatriate and local communities in northern Tanzania and throughout the East African region. The school is independently governed by a board comprised of representatives of the founding missionary organizations and parents. The main campus in Moshi is situated beneath the magnificent splendor of Mount Kilimanjaro and provides an education from Pre-K (three-year olds) to the demanding International Baccalaureate diploma program in the 12th grade. Our second campus is 60 miles (100km) away in the expanding town of Arusha and this also accommodates students from Pre-K up to 12th grade. Over one third of the student body are Tanzanians, mainly the children of local businessmen and employees of international organizations; expatriate students' parents are largely drawn from the development community, missionary organizations, and small family business backgrounds.

Student Body

Total student body (Moshi and Arusha)	500 students
High school enrollment (9 th -12 th grades)	215 students
Boarding enrollment	130 students
2018 Graduating class	55 students
Number of different nationalities	44
Percentage of US citizens	10 %
Percentage of Tanzanian citizens	36 %
Percentage of second-language English speakers	75 %

Faculty

Full-time	52 teachers
Part-time	14 teachers
Nationalities	20% UK, 20% USA, 18% Tanzanian

School Year

ISM's school year consists of 180 teaching days from August to June. The year is divided into four quarters. Grades are determined based on a variety of assessments. M4, M5 and D1 (9th to 11th grade) student assessments in the final term include the results of school examinations. D2 (12th grade) students additionally received grades for IB Diploma examinations in their final term.

Curriculum

The elementary schools follow the Primary Years Program of the International Baccalaureate Organization (IBO), whilst our high schools follow the Middle Years Program of the IBO. In the final two years the majority of students undertake the Diploma program of the International Baccalaureate (IB) either as full diploma students, or by taking a reduced number of diploma courses.

Special Curricular Strengths

ISM was the first school in Africa to offer the International Baccalaureate Diploma program and has maintained a consistent record of academic excellence in the diploma as well as having many teachers involved in the development and examining of IB curricula. The school has a wide and varied CAS (Creativity, Activity, Service) program with a strong emphasis on community service; 11th and 12th grade students are expected to commit a minimum of three hours per week to this program. In celebration of the superb environment in which we live based at the foot of snow-capped Mount Kilimanjaro, the school offers an extensive Outdoor Pursuits program including a significant number of mountain trips on Kilimanjaro and nearby Mount Meru. ISM is also one of the small number of schools worldwide offering all three International Baccalaureate programs.

Grading System

IB students are graded according to the IB system from 1 (very poor) to 7 (excellent). Approximate equivalent US high school grades are shown below:

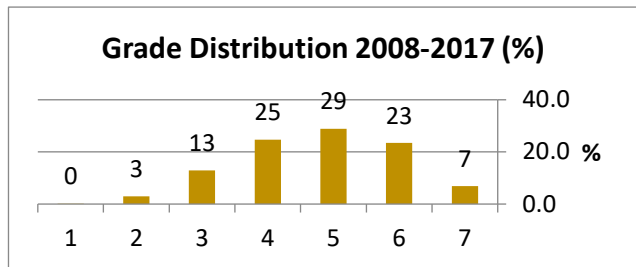
IB Grade	US Equivalent
7, 6	A
5	B+
4	B
3	C
2	C-
1	D

Due to the size of the senior class and the transient student population coming from a wide variety of educational and linguistic backgrounds, students are not usually ranked, and GPA is not calculated.

Senior Class IB Diploma Results 2008-2017

IB Diploma Results 2008-2017

Number of diploma candidates	322
Successful candidates	273 (85%)
Those scoring 30 points + (good)	179 (56%)
Those scoring 35 points + (excellent)	71 (22%)



University Admissions

In the last 5 years, ISM graduates have attended the following colleges and universities:

USA:

Amherst College
Arizona
Arizona State
Bates College
Brown
Carleton College
Colorado College
Connecticut
Cornell
Denison
Drexel
Duke
East Carolina
Emerson
Emory
George Washington
Harvard
Idaho
Illinois Inst.Tech.
Knox
Lynn University
Middlebury
Minnesota
Minnesota State

New Mexico
Northwestern
Oregon
Univ. of Pennsylvania
Univ. of Rochester
Southern Alabama
Stanford
Trinity University (TX)
Vassar College
Washington
Webster
Yale

Canada:

Alberta
British Columbia
Carleton University
Concordia
Manatoba
Memorial
Ottawa
Queens
Sheridan Art and Design
College
Simon Fraser

Toronto
Trent University
Waterloo
York
Britain:
Aston
Bath
Cardiff
Central Lancashire
Chelsea College of Art & Design
Edinburgh
Exeter
Heriot-Watt
Hertfordshire
Huddersfield
Imperial College
Keele
Kent
Kingston
Lancaster
Leeds Metropolitan
Leicester
Loughborough
LSE

Manchester Met.
Nottingham
Oxford Brookes
Plymouth
SOAS
Staffordshire
Sussex

Others:

Amsterdam
Bosnia American U
Cape Town
Erasmus University
Groningen
Hong Kong UST
Jacobs U, Bremen
Le Cordon Bleu, Paris
Leiden University
Maastricht
Manipal, India
Monash University
Otago
Sydney U of Tech
Tumaini, Tanzania
Western Australia